



# STARLIGHT PARK

POWERED BY **ZED CAPITAL REAL ESTATE**

+971 58 898 0456 | [STARLIGHTPARK.AE](http://STARLIGHTPARK.AE)

# WHY MEYDAN

---

**Meydan** embodies the forward thinking vision of His Highness Sheikh Mohammed bin Rashid Al Maktoum, UAE Vice President, Prime Minister and Ruler of Dubai. It has evolved into a sustainable, futuristic city that firmly positions Dubai on the global business stage and offers its residents an unmatched quality of life.



A modern, multi-story apartment building is shown at dusk. The building features a prominent 'AMWAJ' logo on its roof, illuminated in white. The facade is composed of large glass windows and balconies with glass railings. The interior lights are on, and some balconies have small potted plants. The sky is a deep blue, suggesting twilight.

# AMWAJ

## ABOUT AMWAJ DEVELOPMENT

---

The developer of Starlight Park is Amwaj Development, a premier real estate developer in the UAE with a mission to elevate living standards by creating communities that cultivate experience, innovation and offer eco-friendly development solutions. Amwaj Development seeks to redefine the meaning of urban living in Dubai while ensuring premium quality products and a smooth client journey.

# CONNECTING YOU TO THE CITY

**12**  
MINUTES | DOWNTOWN DUBAI

**15**  
MINUTES | BURJ KHALIFA

**15**  
MINUTES | DUBAI MALL

**20**  
MINUTES | DUBAI AIRPORT

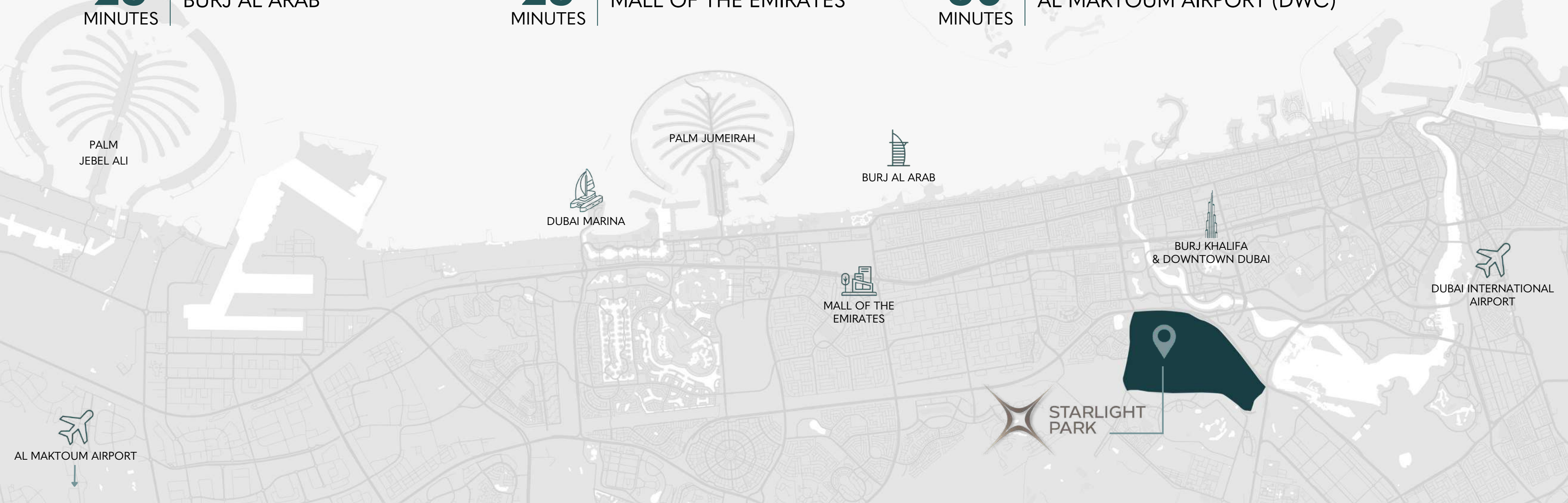
**25**  
MINUTES | PALM JUMEIRAH

**30**  
MINUTES | DUBAI MARINA

**25**  
MINUTES | BURJ AL ARAB

**25**  
MINUTES | MALL OF THE EMIRATES

**30**  
MINUTES | AL MAKTOUM AIRPORT (DWC)



PALM  
JEBEL ALI

PALM JUMEIRAH

BURJ AL ARAB

DUBAI MARINA

MALL OF THE  
EMIRATES

BURJ KHALIFA  
& DOWNTOWN DUBAI

DUBAI INTERNATIONAL  
AIRPORT

AL MAKTOUM AIRPORT

STARLIGHT  
PARK



## URBAN LIVING REDEFINED

**Starlight Park** is nestled in District 11 Meydan along Al Ain Road, Dubai. It is a luxury project embodying family-centric living and offers residents a haven of sophistication. With four opulent buildings, Starlight Park exudes grandeur, complimented by a thoughtfully designed community area as the heart of the compound.



ELEVATING EXPECTATIONS,  
REDEFINING LUXURY.



## CRAFTED WITH METICULOUS ATTENTION TO DETAIL

---

**Starlight Park** is comprised of 4 buildings - Block A, B, C and D. Each building has 5 floors with a rooftop swimming pool and residents lounge. The buildings offer a diverse range of unit types ranging from 1 to 3-bedroom apartments. Starlight Park will feature topnotch resort facilities, offering residents a dynamic living experience. The apartments are equipped with premium kitchen appliances, a built-in TV unit, and a bespoke wall accent in the master bedroom.

348,000 SQ.FT  
CONSTRUCTION AREA

4  
BUILDINGS

B+G+5+ROOF  
LEVELS

172  
APARTMENTS

AMWAJ



STARLIGHT  
PARK

AMWAJ  
DEVELOPMENT



# FACILITIES & AMENITIES



ROOFTOP POOL



FITNESS STUDIO



ROOFTOP CINEMA



RESIDENT LOUNGE



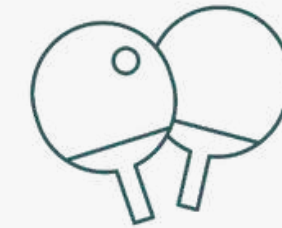
KIDS PLAY AREA



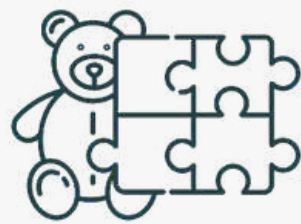
YOGA STUDIO



BOXING STUDIO



PADDLE TENNIS



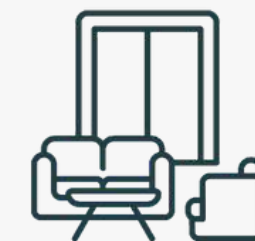
INDOOR KIDS CLUB



24/7 SECURITY



EV CHARGING STATIONS



ELEVATED LOBBY LOUNGE

# MAIN LOBBY





## ROOFTOP POOL

---

Our rooftop pool offers a breathtaking retreat above the bustling city, where shimmering waters blend seamlessly with panoramic views.









## FITNESS STUDIO

---

Welcome to our cutting-edge fitness studio, where residents can embark on a journey of health and wellness right at home.



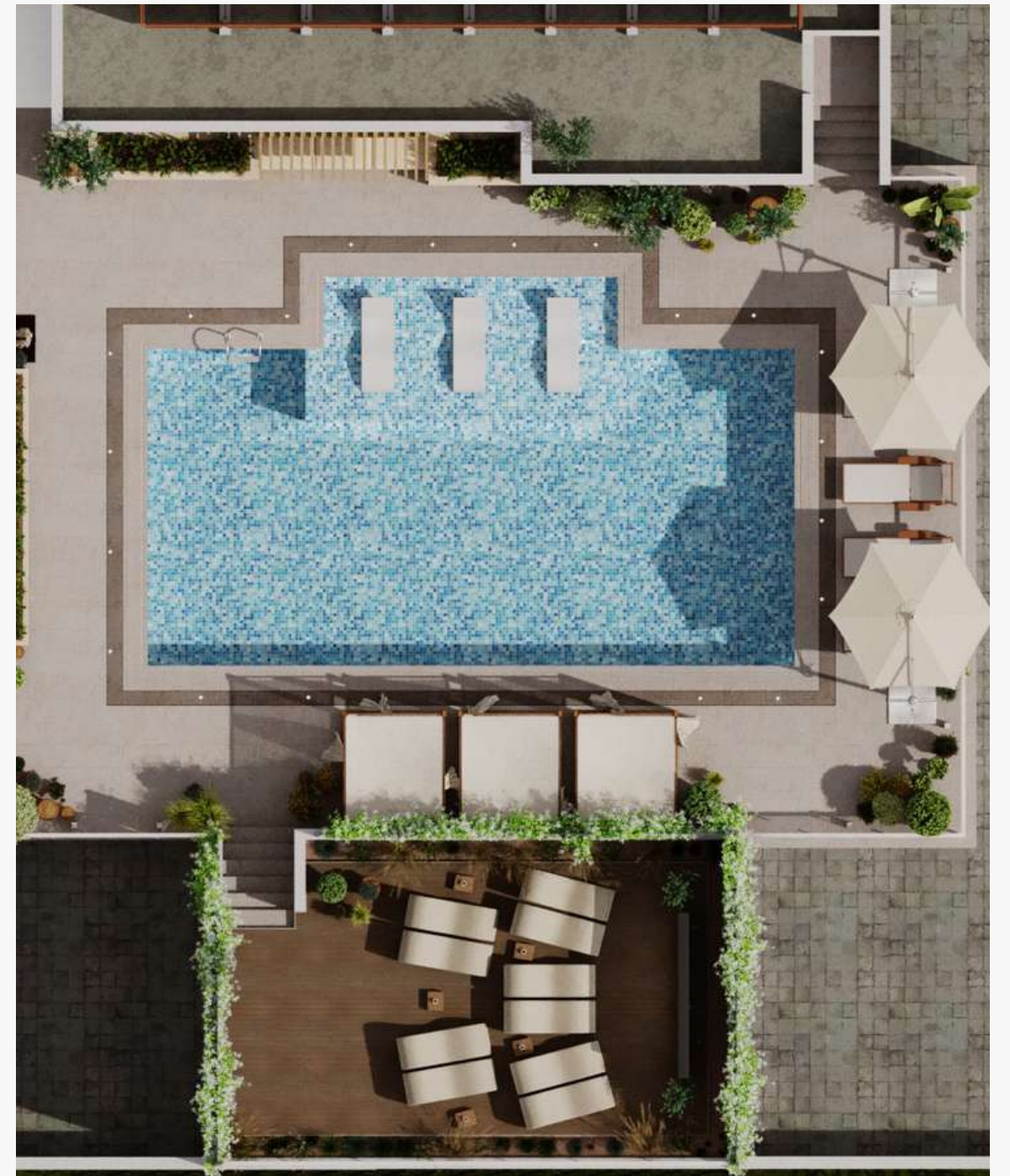




## ROOFTOP CINEMA

---

Experience the magic of cinema under the stars at our rooftop cinema. Nestled amidst the city skyline, our rooftop venue offers a one-of-a-kind cinematic escape.



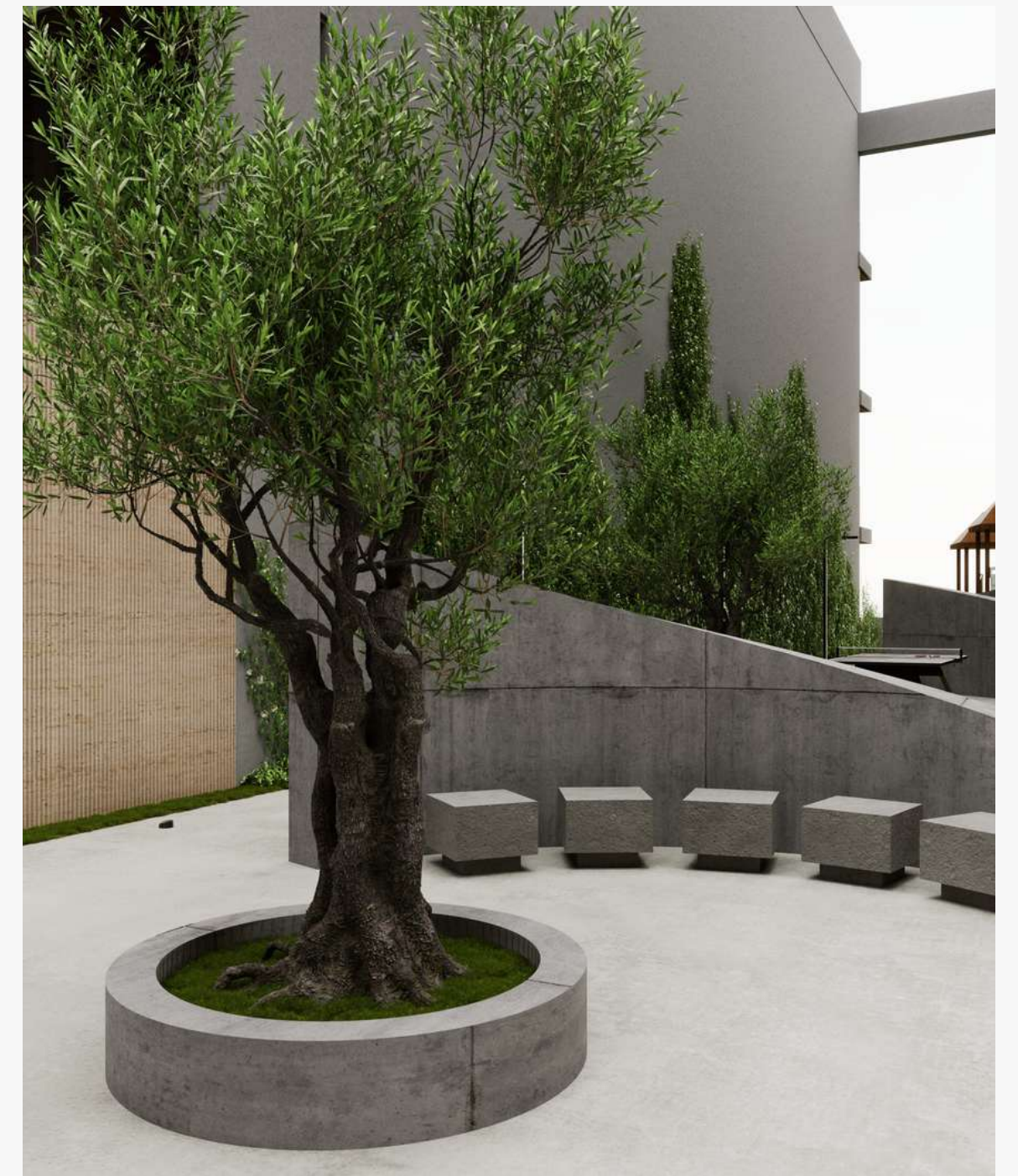




## CORRIDOR & PLAY AREA

---

Our dedicated kids' play area is designed to ignite imagination, encourage active play, and foster friendships.







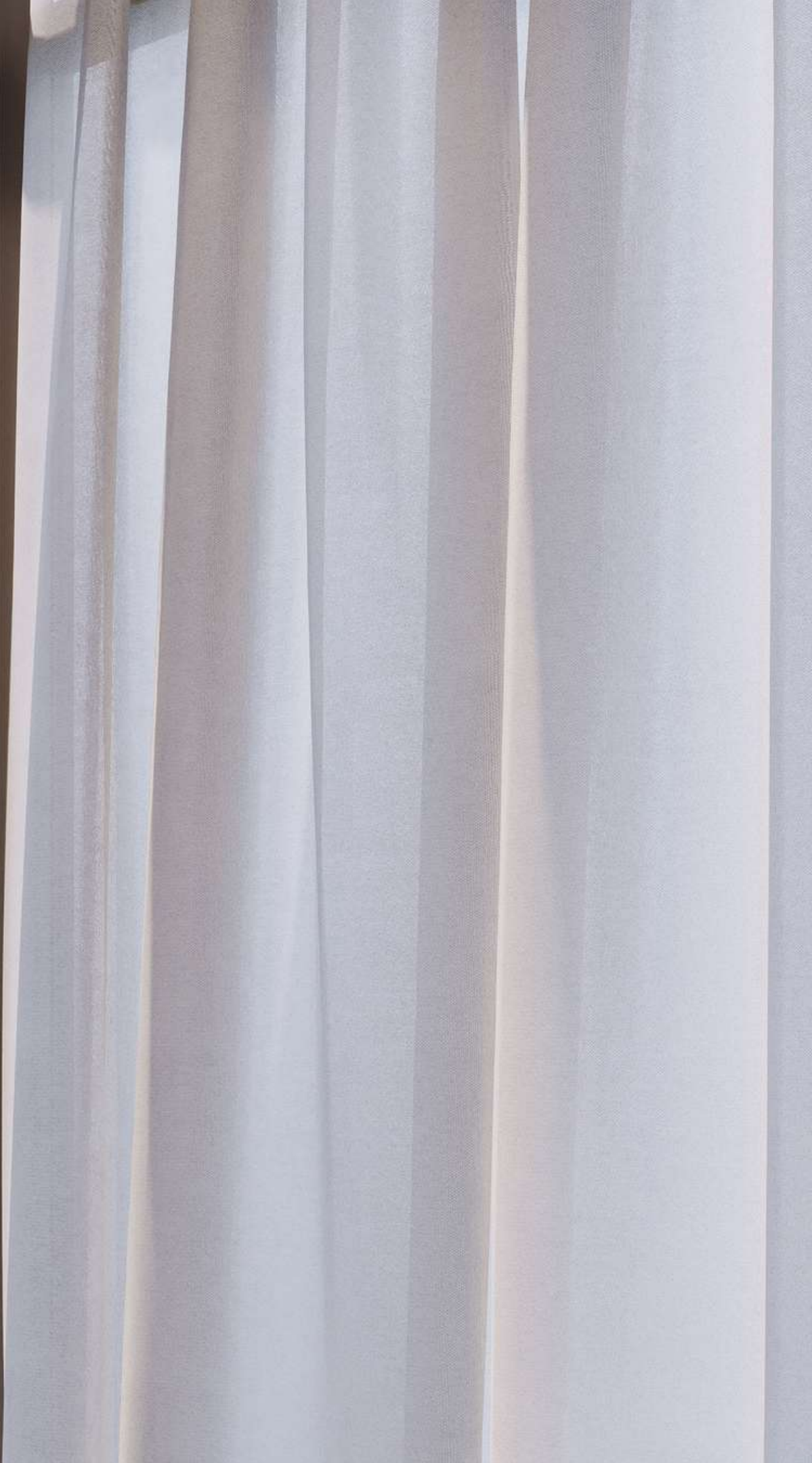
## OUTDOOR ACTIVITIES

---

Soak in the sun and fresh air with our curated outdoor space. It features amenities such as paddle tennis and ping pong ensuring there is something for everyone to enjoy.



# THE APARTMENTS





## LIVING AREA

---

Adorned with contemporary furnishings and designer touches, this exquisite space offers a seamless blend of elegance and functionality.



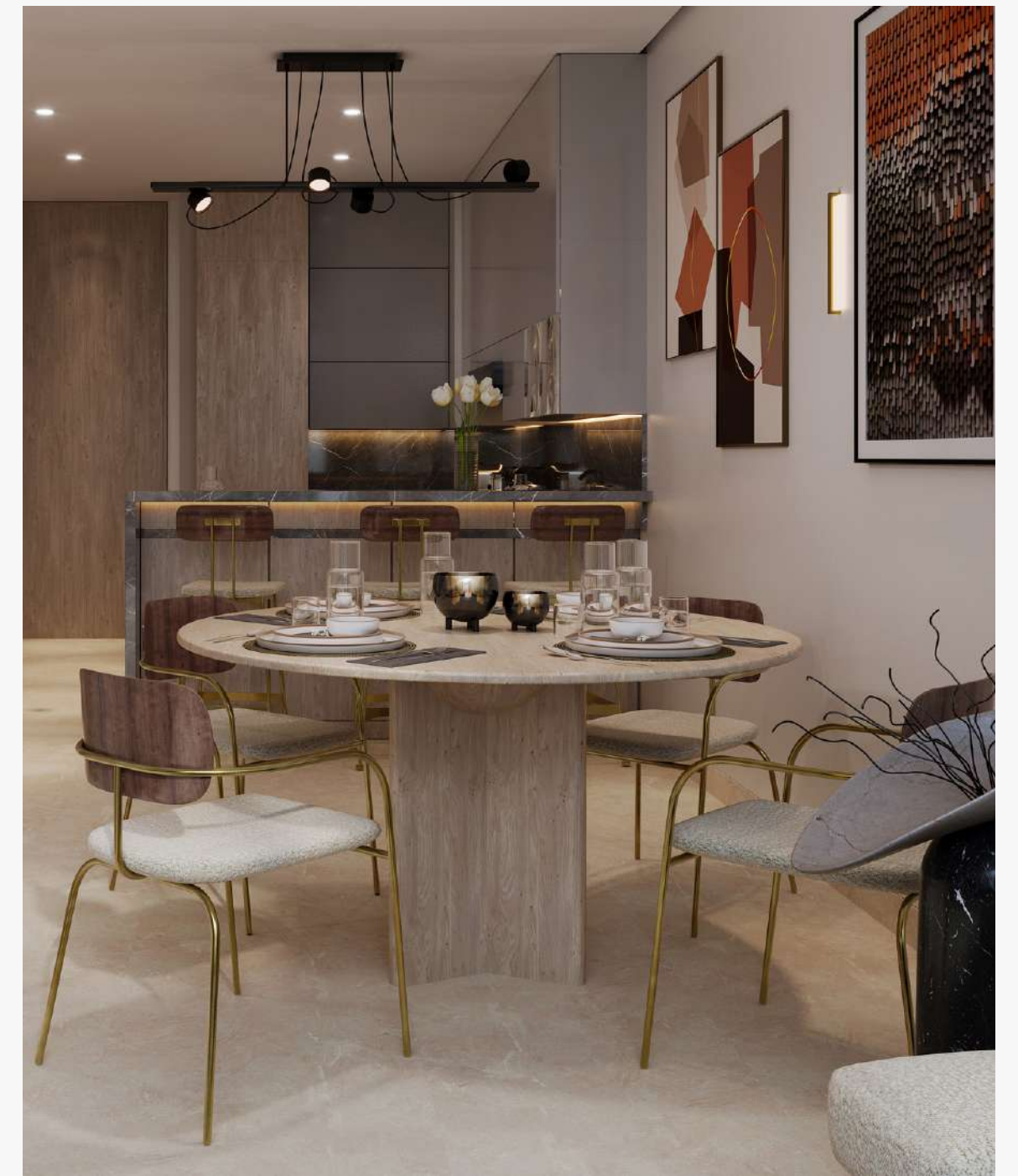




## KITCHEN & DINING AREA

---

Step into our meticulously designed kitchen and dining area, where functionality meets elegance in perfect harmony.





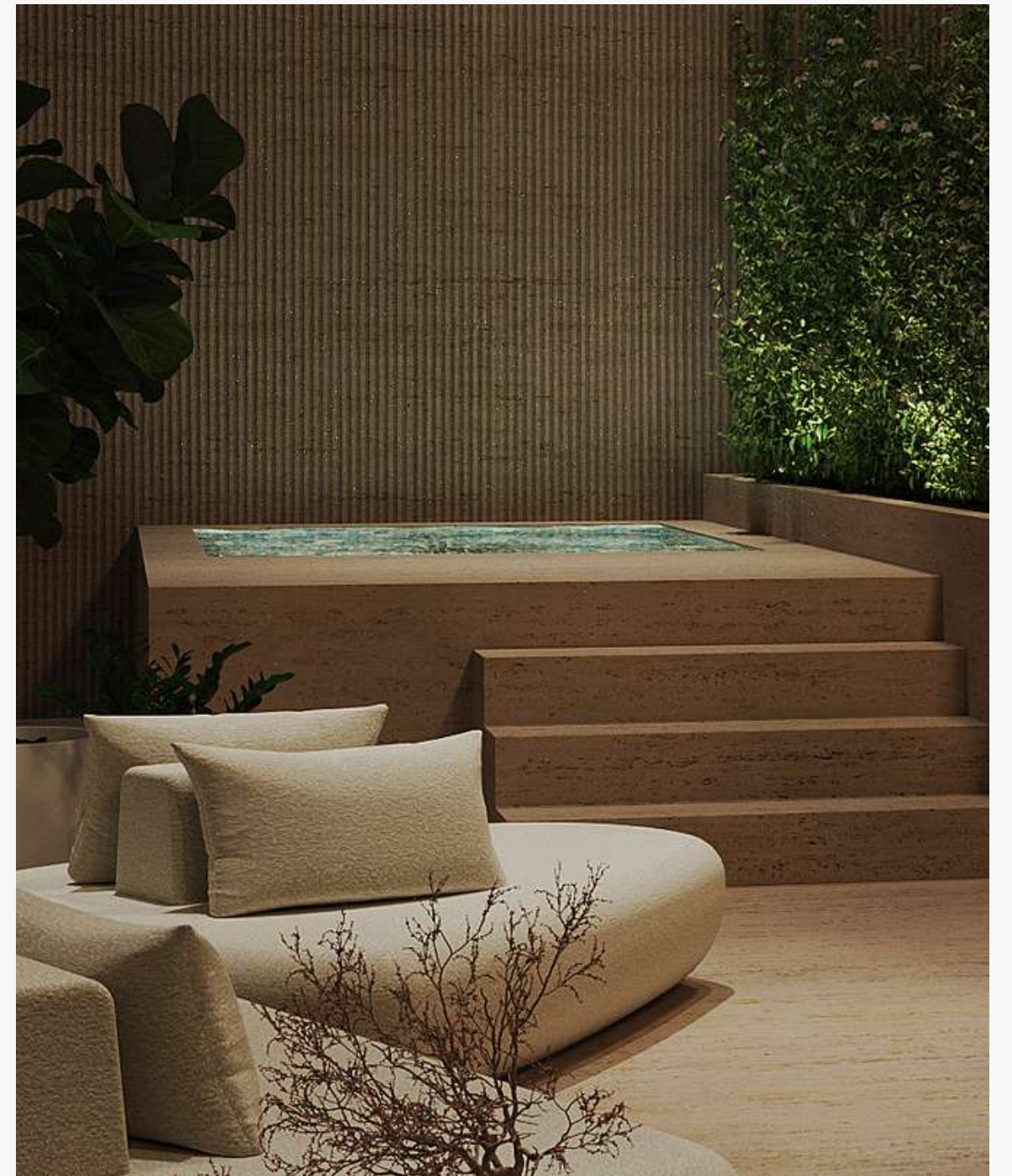




## PRIVATE POOL

---

Escape to your own private oasis within the comfort of your own home. A sanctuary where you can retreat and rejuvenate.





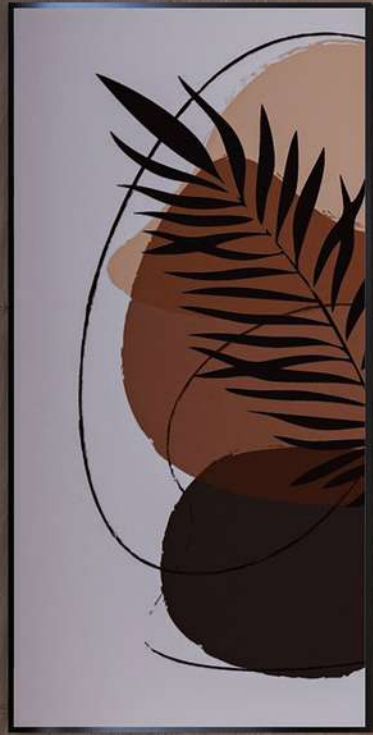


## BEDROOMS & CLOSET

---

Our bedroom space exudes a timeless elegance that effortlessly blends style with comfort. It features a thoughtfully designed closet that offers ample storage space.

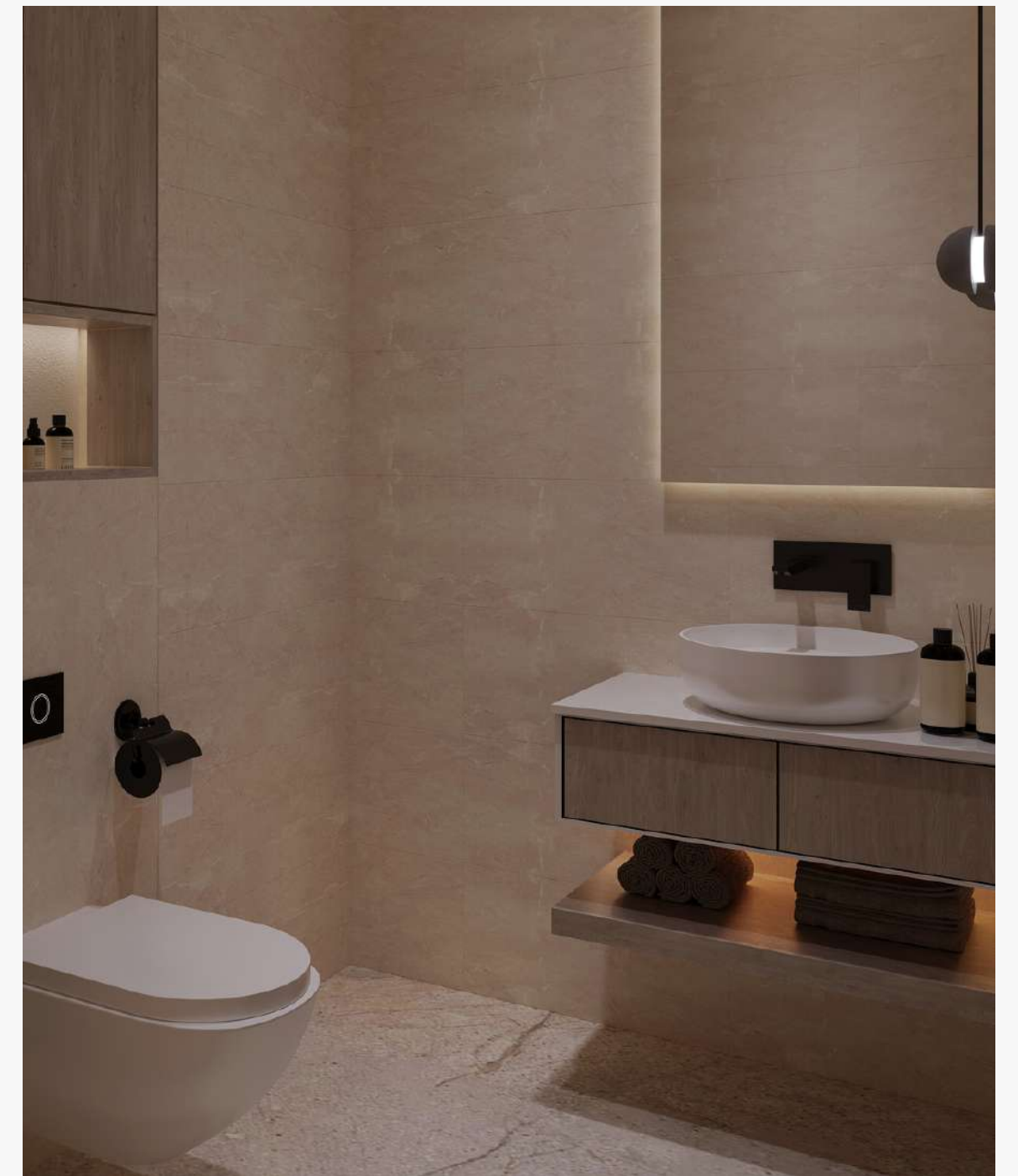


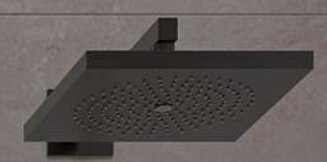


# BATHROOMS

---

Our modern bathrooms are a sanctuary of contemporary luxury and a place where sleek design meets ultimate comfort.



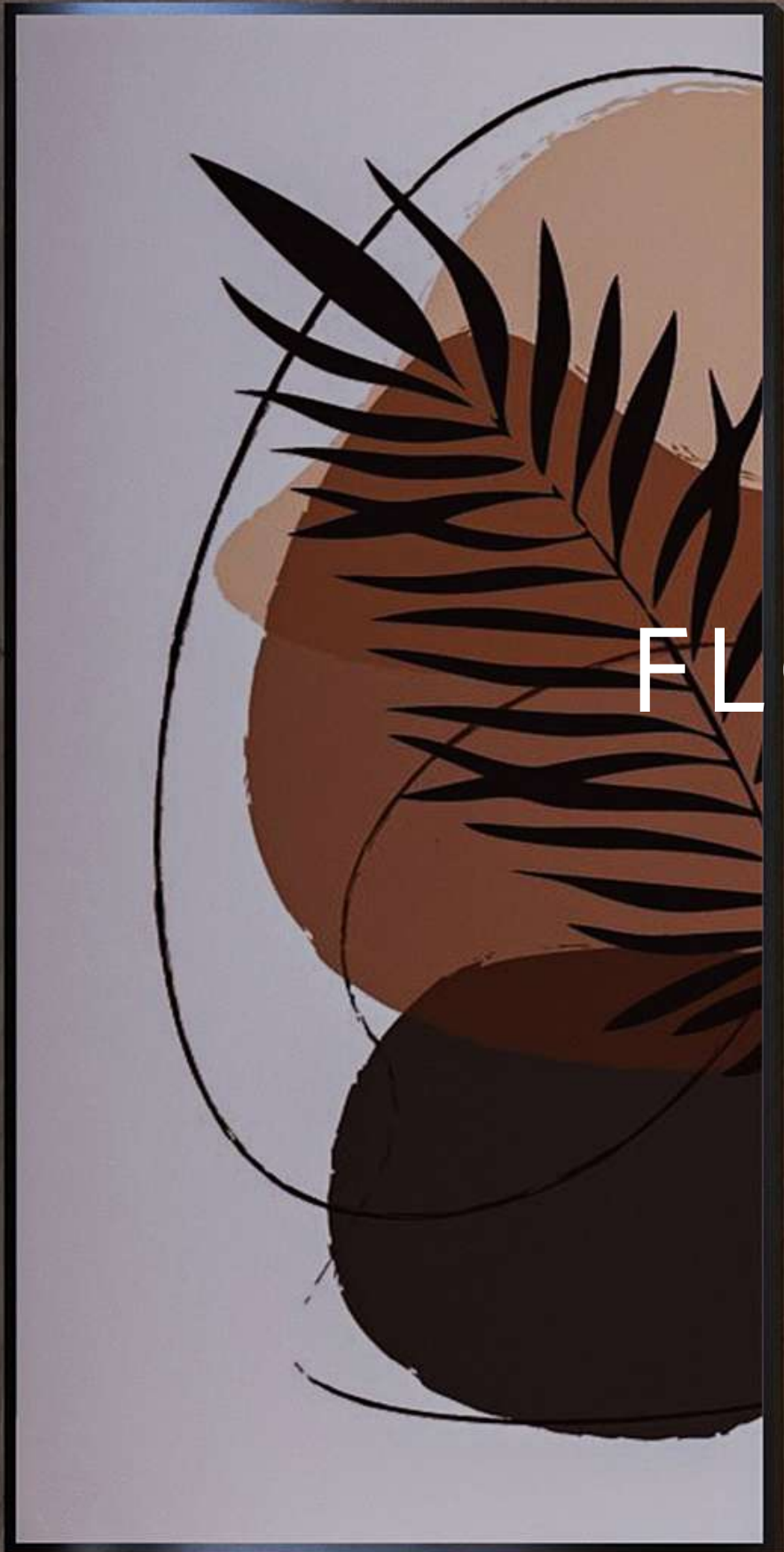


# STUDY ROOM

Whether you're an academic, an artist, or an entrepreneur, this space can be crafted to inspire and empower your endeavors.







# FLOOR PLANS



# 1 BEDROOM - TYPE 1



## KEY PLANS

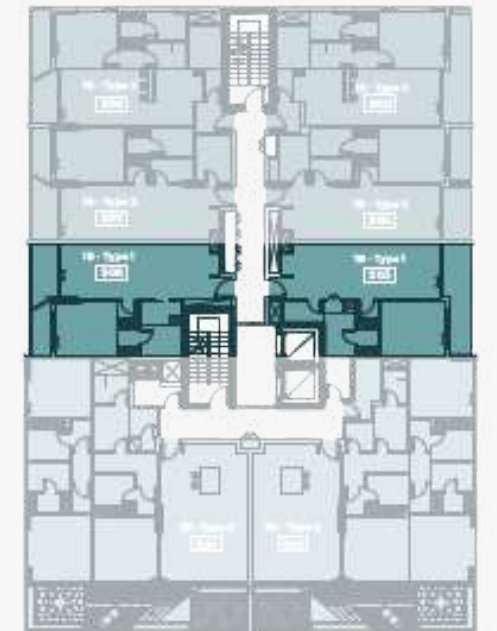
Level 1  
Bldgs A,B,C,D



Level 2&3  
Bldgs A,B,C,D



Level 4&5  
Bldgs A,B,C,D



**UNIT AREA**

668 - 673 SQ.FT

**BALCONY AREA**

115 SQ.FT

**TOTAL AREA**

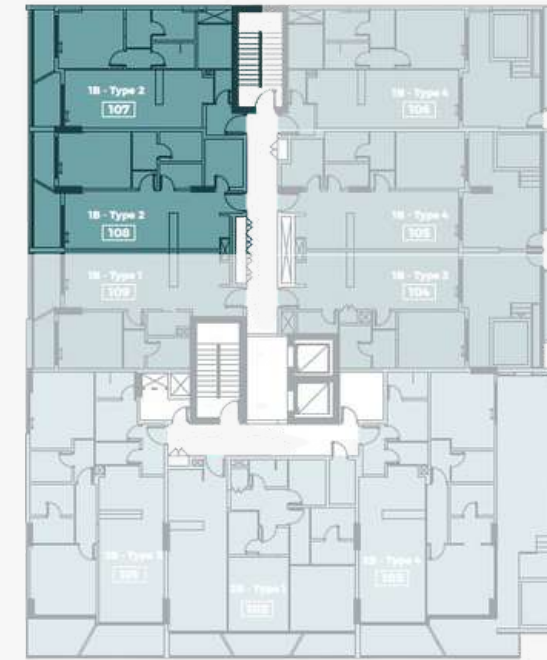
783 - 788 SQ.FT

# 1 BEDROOM - TYPE 2

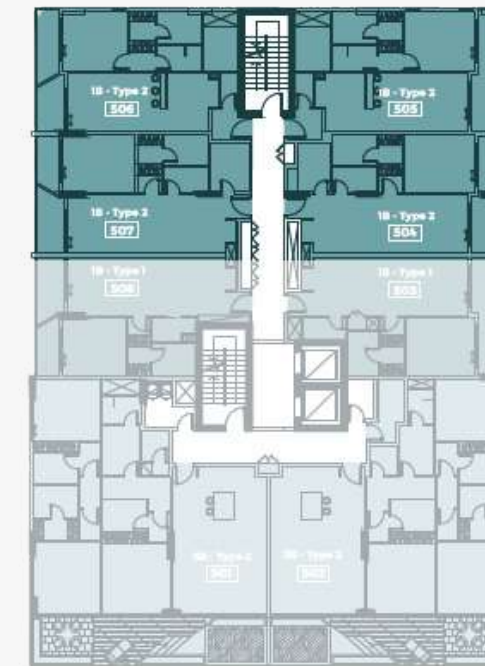


## KEY PLANS

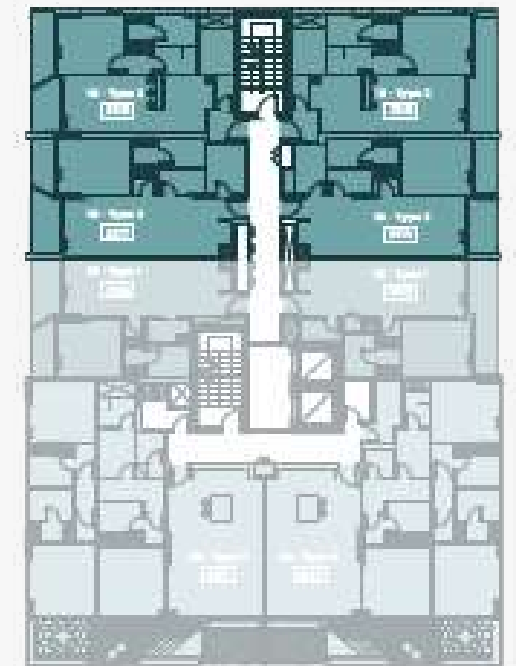
Level 1  
Bldgs A,B,C,D



Level 2&3  
Bldgs A,B,C,D



Level 4&5  
Bldgs A,B,C,D



**UNIT AREA**

743 - 753 SQ.FT

**BALCONY AREA**

115 - 117 SQ.FT

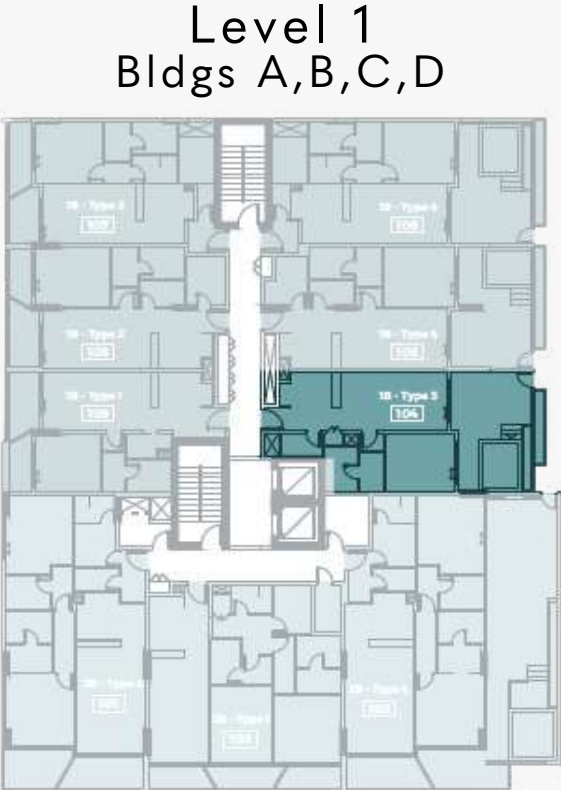
**TOTAL AREA**

783 - 880 SQ.FT

# 1 BEDROOM - TYPE 3



## KEY PLANS



<b>UNIT AREA</b>	673 SQ.FT
------------------	-----------

<b>BALCONY AREA</b>	332 SQ.FT
---------------------	-----------

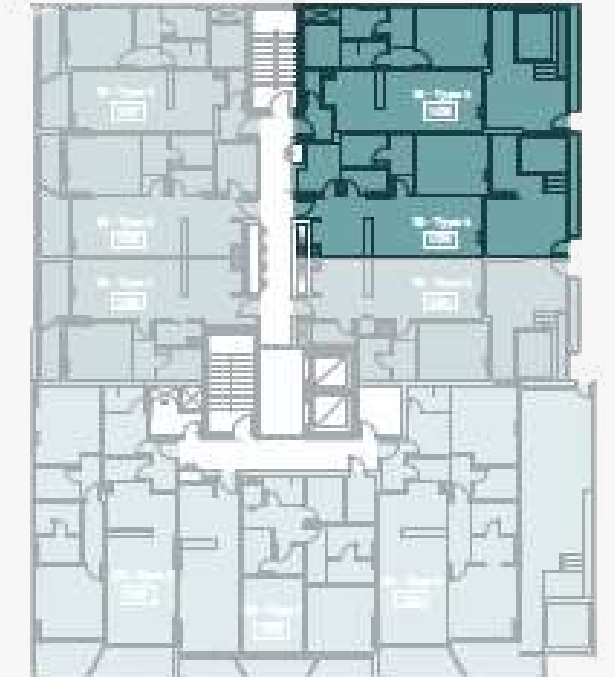
<b>TOTAL AREA</b>	1,005 SQ.FT
-------------------	-------------

# 1 BEDROOM - TYPE 4



## KEY PLANS

Level 1  
Bldgs A,B,C,D



**UNIT AREA**

743 - 763 SQ.FT

**BALCONY AREA**

332 - 337 SQ.FT

**TOTAL AREA**

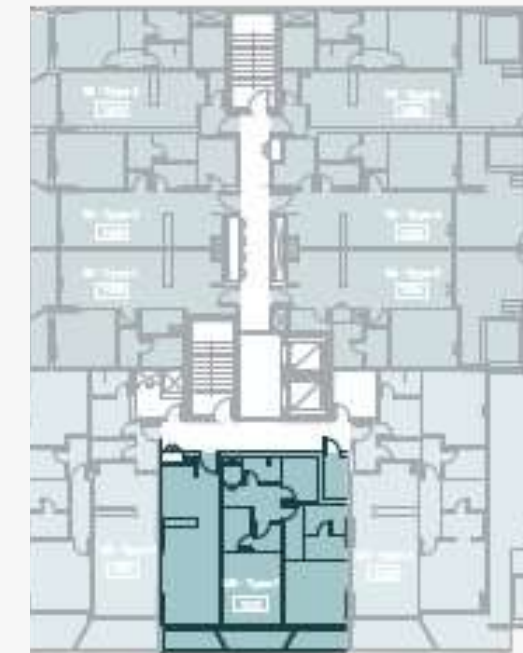
1,075 - 1,100 SQ.FT

# 2 BEDROOM - TYPE 1

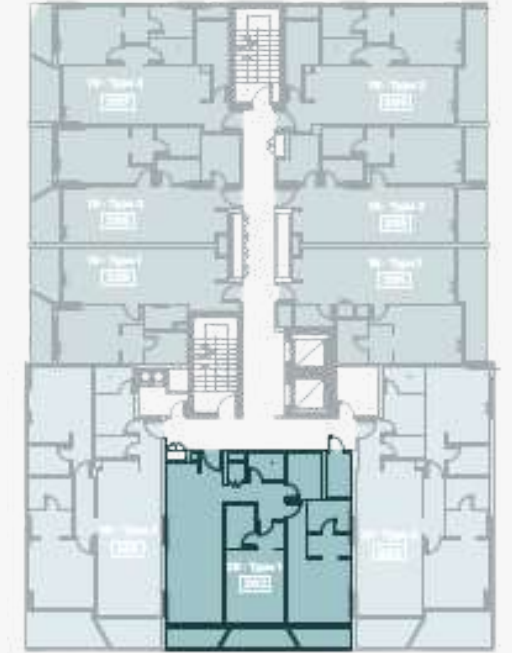


## KEY PLANS

Level 1  
Bldgs A & C



Level 2&3  
Bldgs A & C



**UNIT AREA**

1,111 SQ.FT

**BALCONY AREA**

162 SQ.FT

**TOTAL AREA**

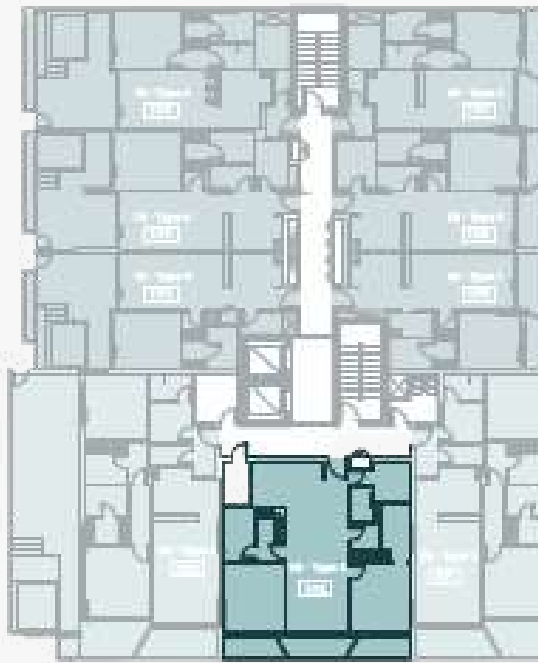
1,273 SQ.FT

# 2 BEDROOM - TYPE 2

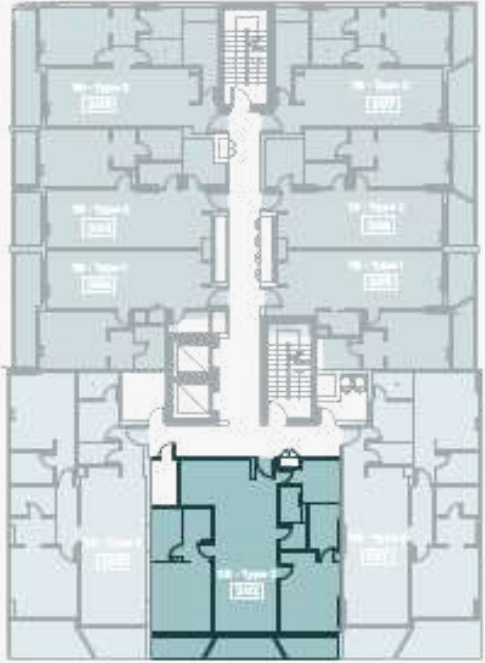


## KEY PLANS

Level 1  
Bldgs B & D



Level 2&3  
Bldgs B & D



<b>UNIT AREA</b>	1,120 SQ.FT
------------------	-------------

<b>BALCONY AREA</b>	162 SQ.FT
---------------------	-----------

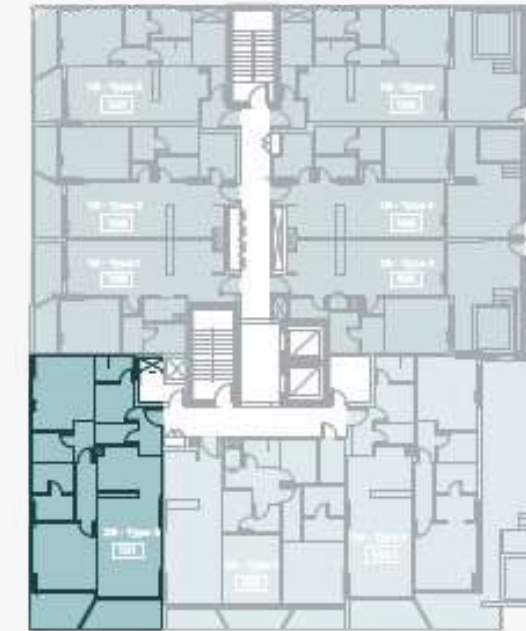
<b>TOTAL AREA</b>	1,282 SQ.FT
-------------------	-------------

# 2 BEDROOM - TYPE 3

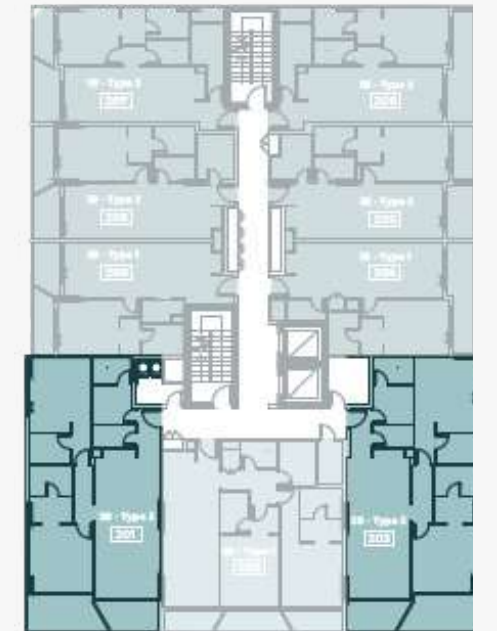


## KEY PLANS

Level 1  
Bldgs A,B,C,D



Level 2&3  
Bldgs A,B,C,D



**UNIT AREA**

1,162 - 1,165 SQ.FT

**BALCONY AREA**

177 SQ.FT

**TOTAL AREA**

1,339 - 1,342 SQ.FT



# 2 BEDROOM - TYPE 4



## KEY PLANS

Level 1  
Bldgs A,B,C,D



<b>UNIT AREA</b>	1,162 SQ.FT
------------------	-------------

<b>BALCONY AREA</b>	858 SQ.FT
---------------------	-----------

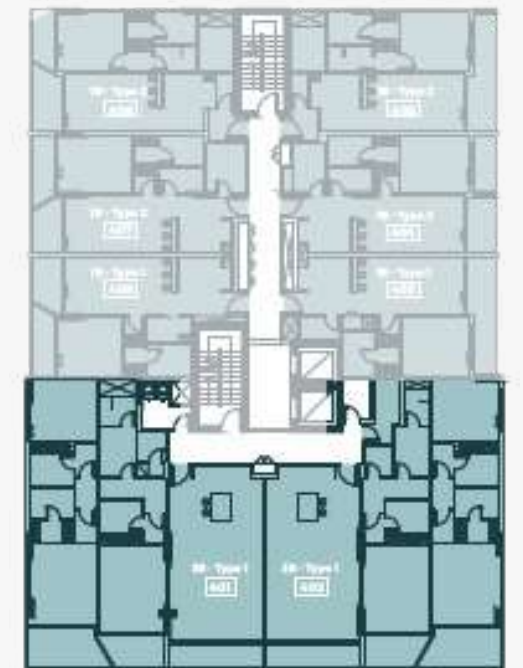
<b>TOTAL AREA</b>	2,020 SQ.FT
-------------------	-------------

# 3 BEDROOM - TYPE 1



## KEY PLANS

Level 4  
Bldgs A,B,C,D



**UNIT AREA**

1,704 - 1,729 SQ.FT

**BALCONY AREA**

258 SQ.FT

**TOTAL AREA**

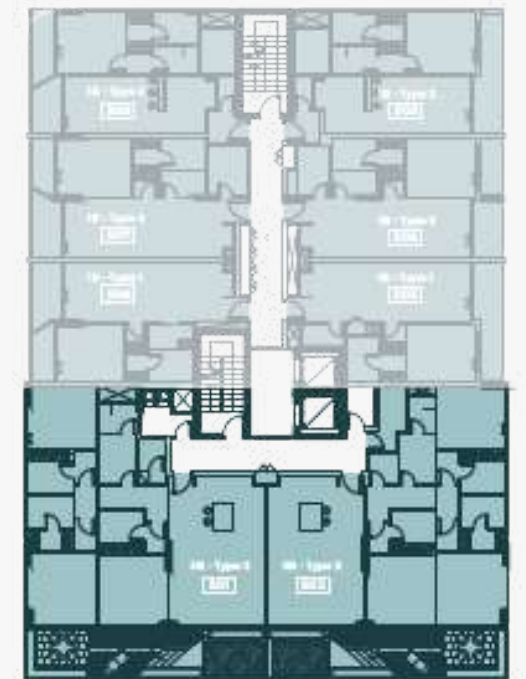
1,962 - 1,987 SQ.FT

# 3 BEDROOM - TYPE 2



## KEY PLANS

Level 5  
Bldgs A,B,C,D



**UNIT AREA**

1,546 - 1,572 SQ.FT

**BALCONY AREA**

415 SQ.FT

**TOTAL AREA**

1,961 - 1,987 SQ.FT

CRAFTING EXCELLENCE



RADIATING ELEGANCE



CULTIVATING EXPERIENCE



AMWAJ  
DEVELOPMENT

800 AMWAJ | [AMWAJ-DEVELOPMENT.COM](http://AMWAJ-DEVELOPMENT.COM)

meydan